



# Splendid

Condominium

KATA BEACH PHUKET



Make yourself at home near Karon Beach in one of the world's most distinguished tropical destinations.



The pristine white sands of Kata Beach and nearby 'Crab Island' are all part of the view.





Crab Island, known as 'Koh Poo' in the local dialect, is a part of the dramatic sunset sea scape seen from every residence at Splendid Condo.





Kata-Karon offers prestigious tropical living on the west coast





The clear waters off Kata-Karon are home to beautiful coral reefs





Kata beach life is uncrowded and convenient





Splendid views for all

Serenity by the sea  
LUXURY SEAVIEW CONDOMINIUM





Splendid Condominium

KATA BEACH

Make a bee-line for the beach

Serenity by the sea  
LUXURY SEAVIEW CONDOMINIUM





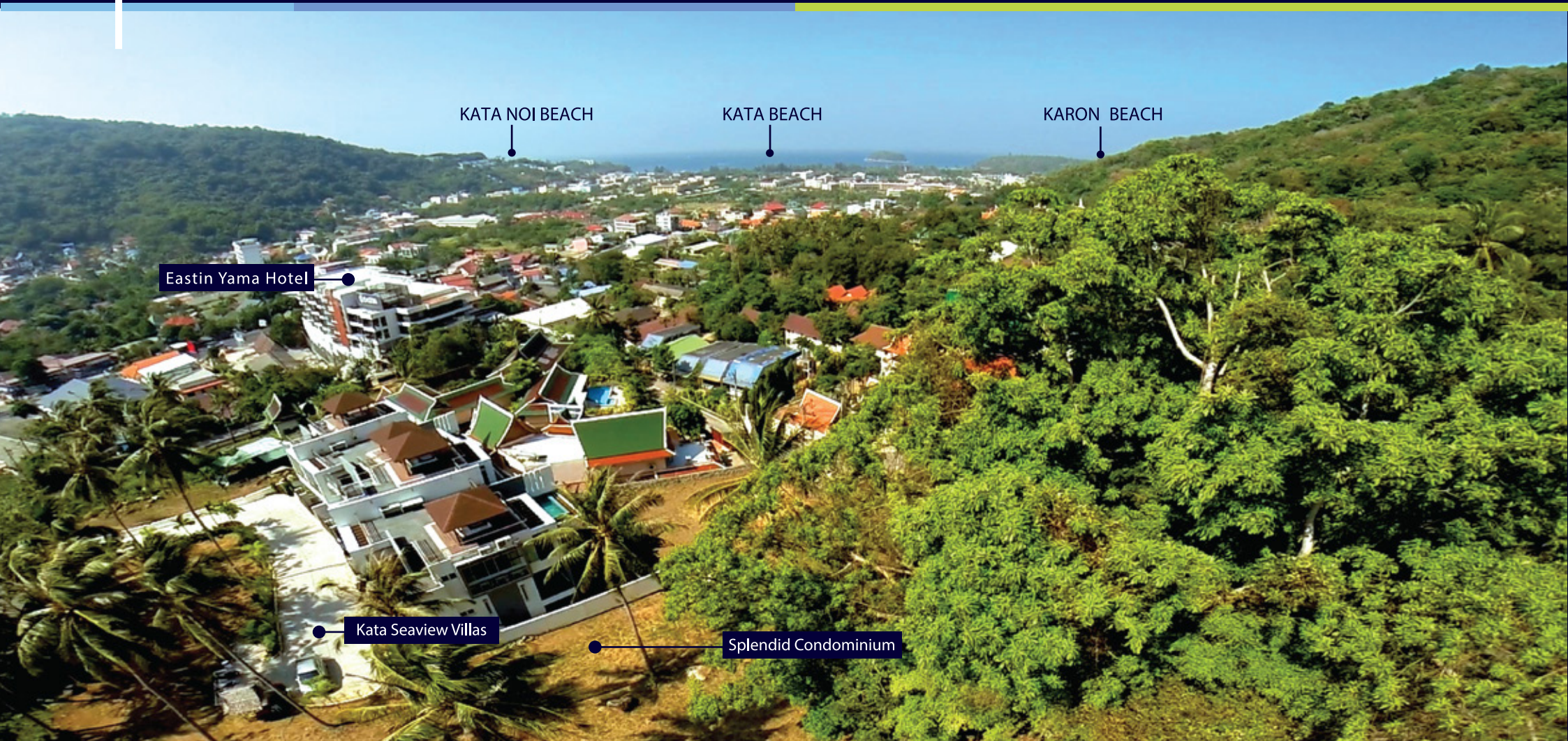
Drive home along the boulevard to your hillside retreat under the watchful eye of the Big Buddha.





Close to three of the best beaches on the island: Kata Noi, Kata & Karon.





Secluded in one of the island's finer residential districts





A sea view from the ground floor up

(View from actual site at ground floor level)





(Actual view from upper floors)

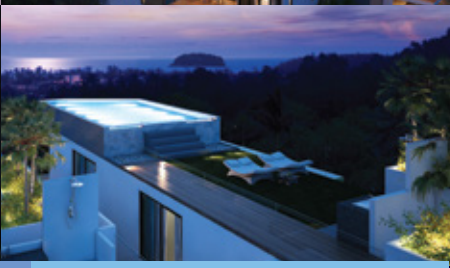




## SERENITY BY THE SEA – LIVE A SPLENDID LIFE

Every resident at Splendid Condo enjoys the simple pleasure of a stunning sea view over Kata-Karon Bay from the tranquility of this boutique hillside collection of just 13 bespoke residences on the west coast of Phuket in southern Thailand.

Living at Splendid Condo is a uniquely luxurious lifestyle, where every day is a tranquil experience cocooned in a high-end community of homes individually designed to celebrate the moods of the Andaman Sea.





*Splendid Condo residential options include one- and two-bedroom condominium units, duplex apartments and a rooftop penthouse.*

*Every residence at Splendid Condo comes furnished in an aquatic theme and gives you an unobstructed sea view that is best appreciated while soaking in the Jacuzzi tub on your private balcony or rooftop vantage hangout.*

*We pride ourselves on practical and durable designs of the highest quality with the best materials to make beautiful homes built to last a lifetime. This is our guarantee to you when you invest in a 'Splendid' lifestyle.*



\*Computer generated image, subject to change without prior notice







Splendid Condo comprises two residential buildings in a subdued resort-style arrangement covering 816.16 sq.m. with a lobby, swimming pool, fitness and private parking facilities.





\*Computer generated image, subject to change without prior notice

Building 1 comprises a total of 10 one-bedroom and two-bedroom residences as well as a multi-level luxury duplex unit. Residents enjoy access to exclusive resort-style facilities including a swimming pool with a sea view and fully equipped fitness centre.





\*Computer generated image, subject to change without prior notice

Building 2 comprises 2 two-bedroom units and the exclusive Andaman Penthouse with private rooftop garden and infinite edge swimming pool.

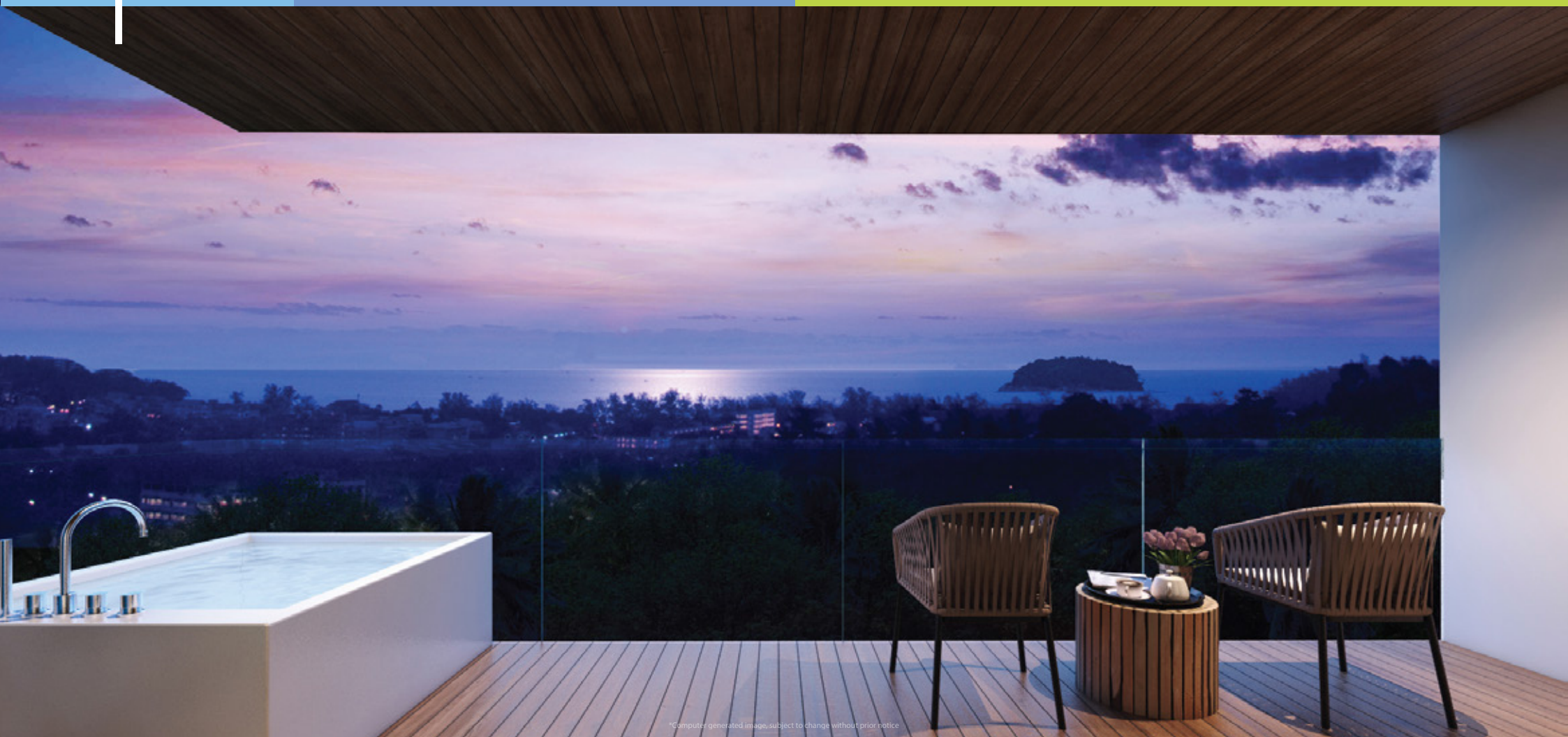




\*Computer generated image subject to change without prior notice

Stunning sunsets are simply part of daily life at Splendid Condo

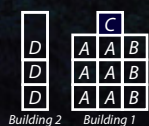




\*Computer generated image, subject to change without prior notice

Every residence has an unobstructed sea view... One best appreciated while soaking in the spa tub on your private balcony.





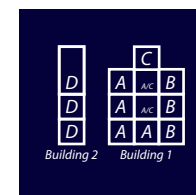
\*Computer generated image, subject to change without prior notice





Building 1  
4 Carpark Space

Building 2  
2 Carpark Space



Carpark Floor

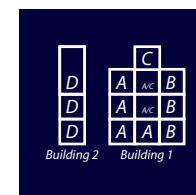




Building 1  
A-101 / 2 Bedroom  
A-102 / 2 Bedroom  
B-101 / 1 Bedroom

Building 2  
D-101 / 2 Bedroom

Ground Floor



First Floor





## Building 1

A-201 / 2 Bedroom

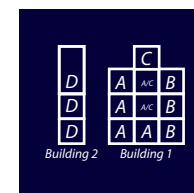
A-202 / 2 Bedroom

B-201 / 1 Bedroom

C-101 / 2 Bedroom / Roof

## Building 2

D-101 / 2 Bedroom



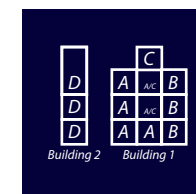
2nd Floor





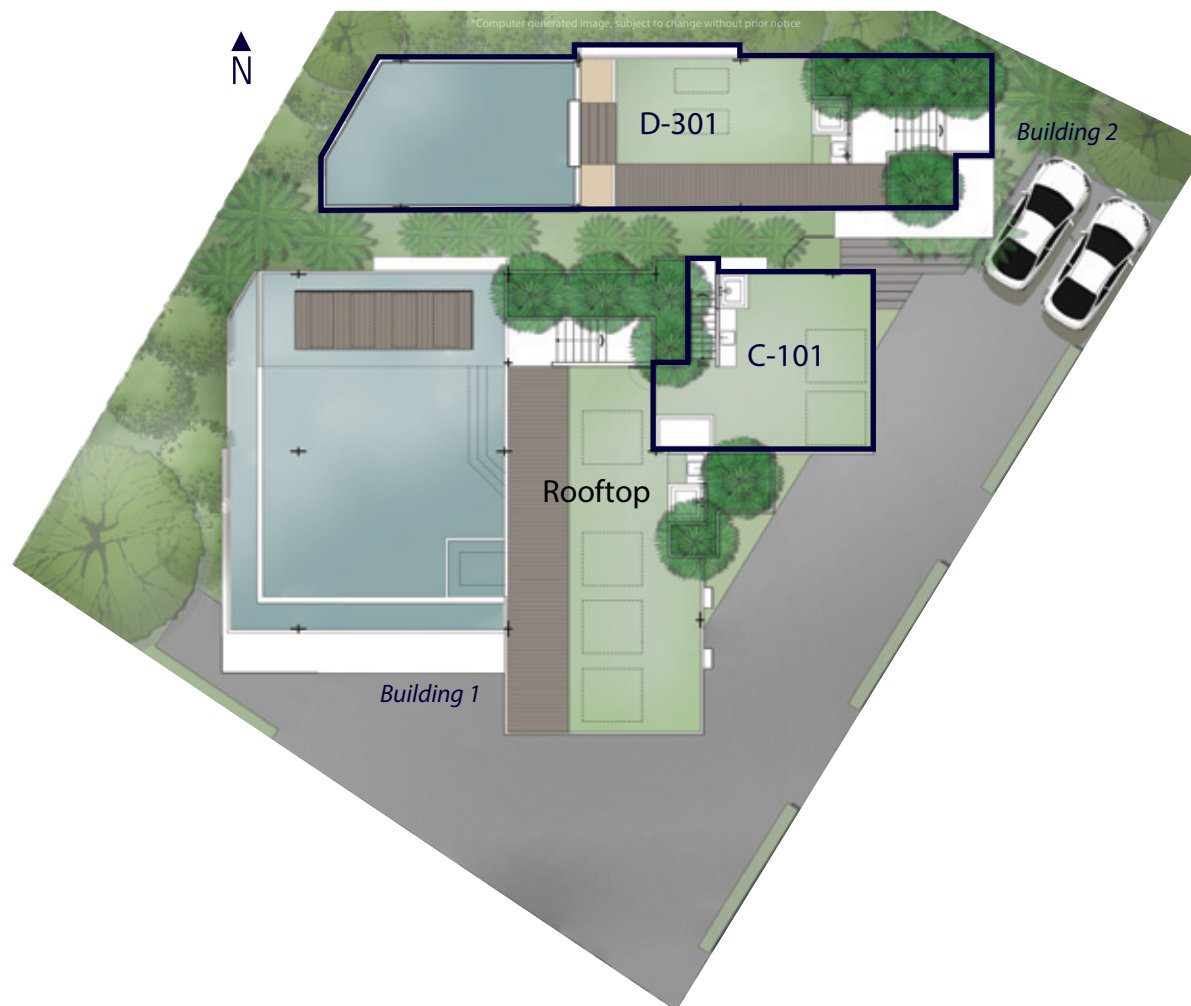
Building 1  
 A-301 / 2 Bedroom  
 A-302 / 2 Bedroom  
 B-301 / 1 Bedroom  
 C-101 / 2 Bedroom / Roof

Building 2  
 D-301 / 2 Bedroom / Roof



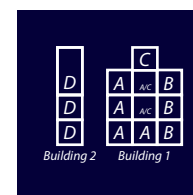
3rd Floor





Building 1  
C-101 / Roof

Building 2  
D-301 / Roof



Upper Level (rooftop)



## **Melody of The Sea (59.69 – 59.72 sq.m.)**

Multi-function living space for family living in a highly practical ergonomic layout that can be partially transformed into a practical work space.



**TYPE A**

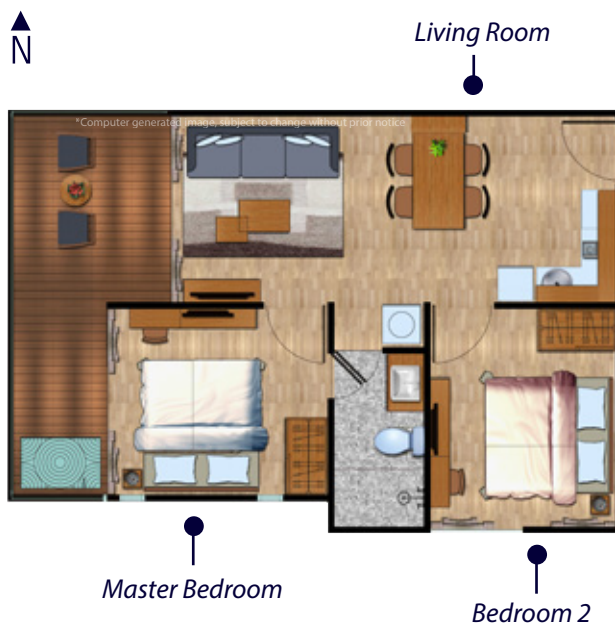


**LIVING ROOM**



## *Melody of The Sea (59.69 – 59.72 sq.m.)*

*The spacious Master Bedroom opens onto the private terrace*



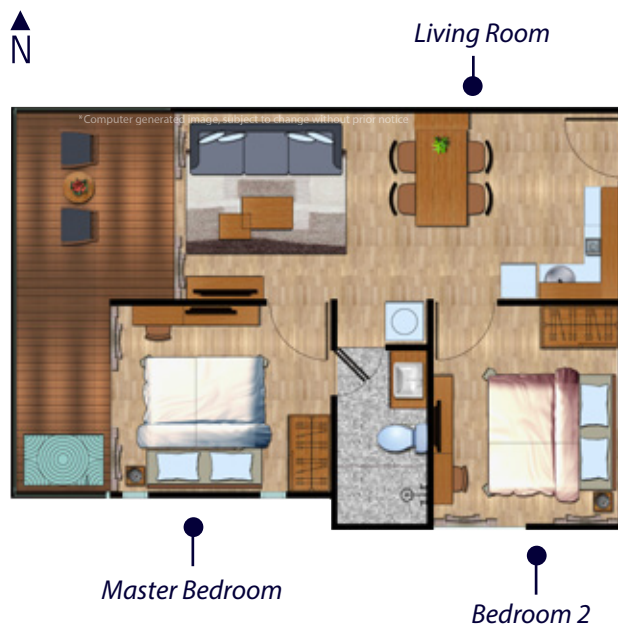
**TYPE A**



**MASTER BEDROOM**

## Melody of The Sea (59.69 – 59.72 sq.m.)

Stylish built-in furniture features smart storage space in the 2nd bedroom



TYPE A

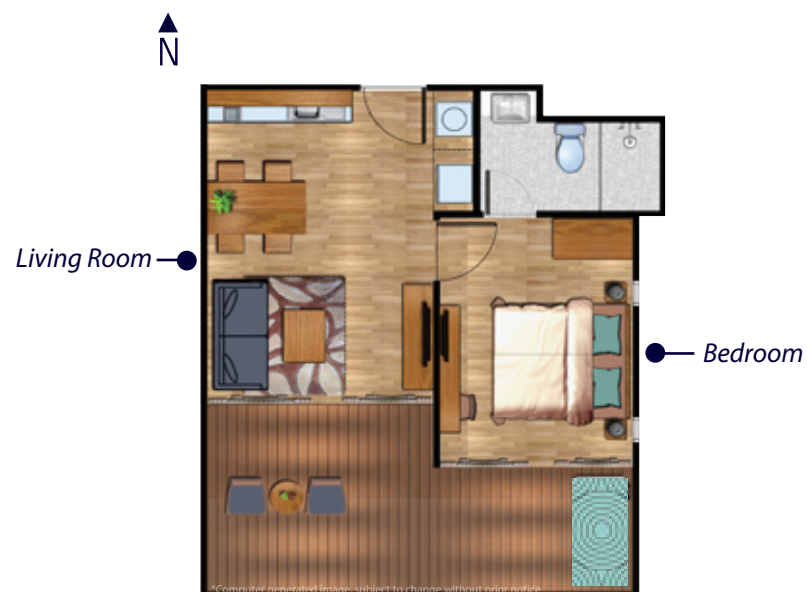


BEDROOM 2



## Coral (53.67 sq.m.)

A perfect fit for a couple or a single resident, Coral is a compact one-bedroom apartment with an en-suite bathroom, a separate living space fitted with a pantry and a full-length west-facing balcony.

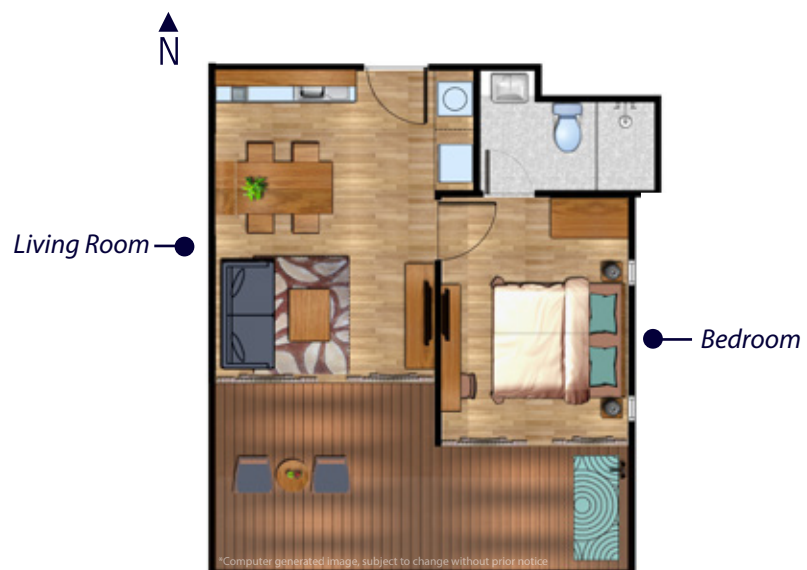


TYPE B

LIVING ROOM

## Coral (53.67 sq.m.)

Light tone décor draws inspiration from the warm shallow waters where coloured coral is found and built in space-efficient furniture features smart storage space. The double bed can be extended to sleep a third person.



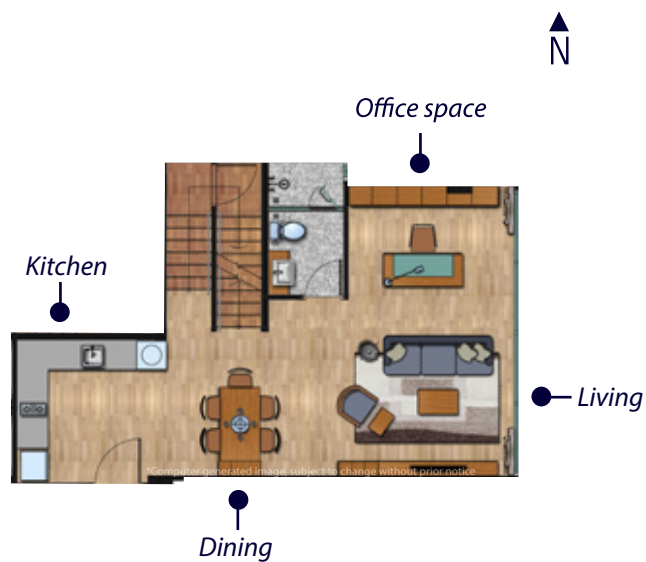
TYPE B

BEDROOM



## Rhythm of The Sea Duplex (151.8 sq.m.)

A spiral staircase leads to the upper level, which houses two large bedrooms, each with a private bathroom and a second living room with sofa or office space.

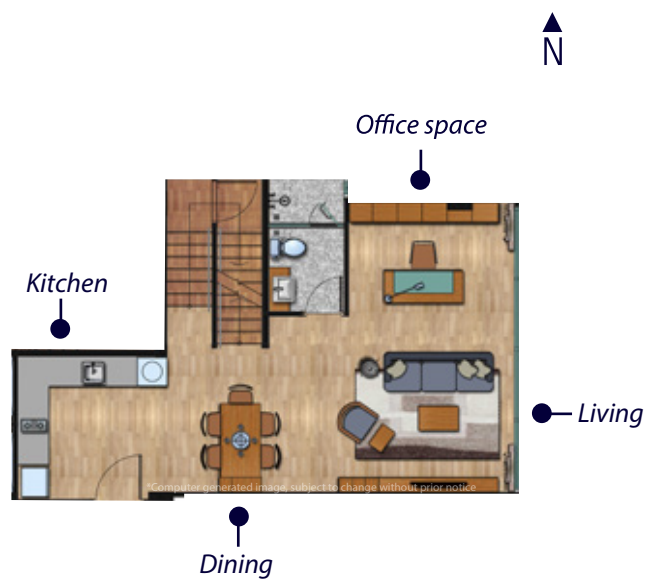


TYPE C

LIVING ROOM

## Rhythm of The Sea Duplex (151.8 sq.m.)

The spacious lower level living space has a well-equipped kitchen and dining area designed for six.



TYPE C

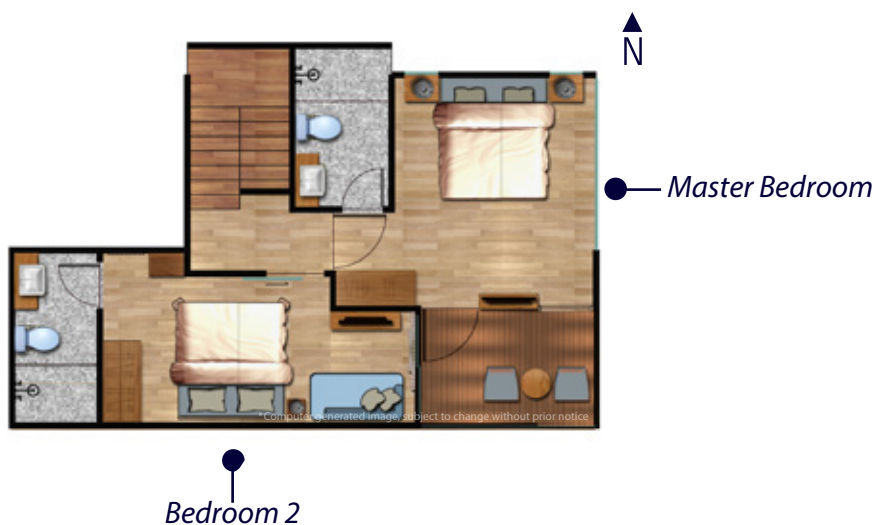
LIVING ROOM



## Rhythm of The Sea Duplex (151.8 sq.m.)

*Ideal for a family of up to six, Rhythm of The Sea Duplex is a spacious two-story family home with a private rooftop patio.*

*Feel fantastically free in an exclusive open-plan arrangement with high ceilings and sweeping views across the bay on every floor.*



TYPE C

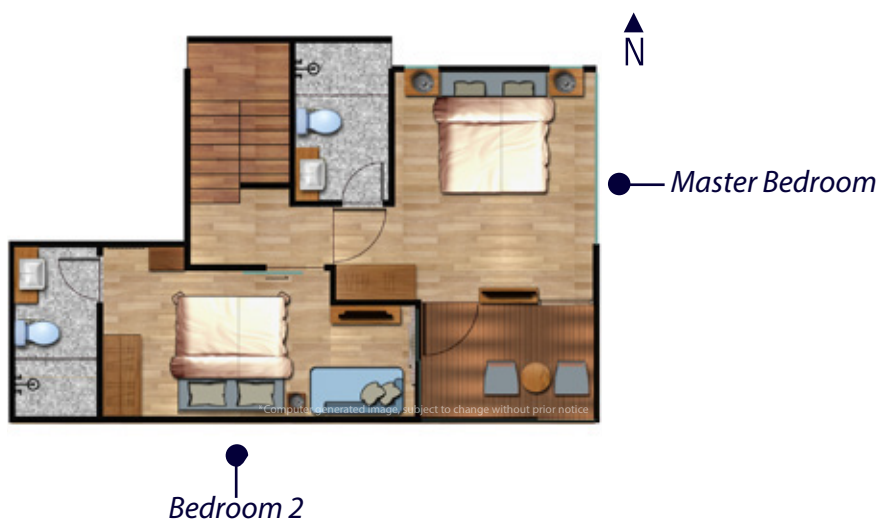


BEDROOM 2

## Rhythm of The Sea Duplex (151.8 sq.m.)

*Ideal for a family of up to six, Rhythm of The Sea Duplex is a spacious two-story family home with a private rooftop patio.*

*Feel fantastically free in an exclusive open-plan arrangement with high ceilings and sweeping views across the bay on every floor.*



TYPE C

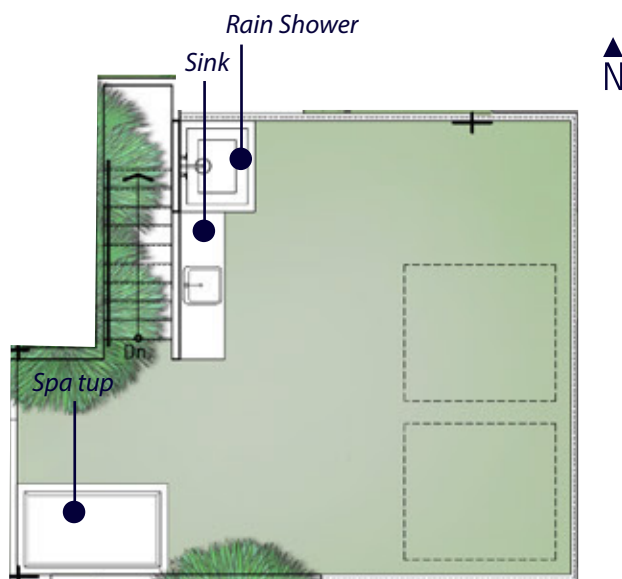


MASTER BEDROOM



## Rhythm of The Sea Duplex (151.8 sq.m.)

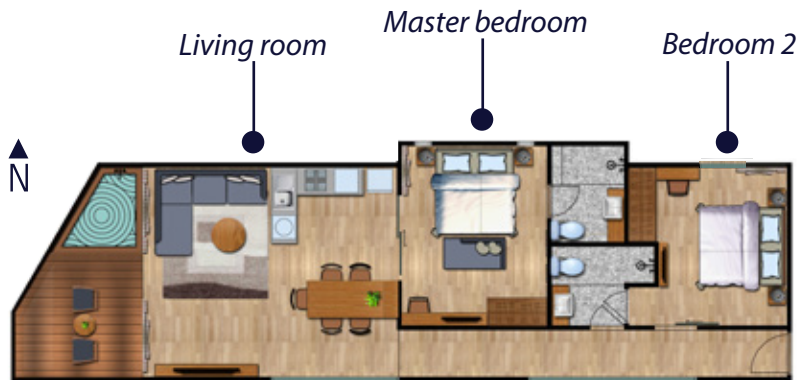
Garden parties, barbecues and al-fresco bathing can all be enjoyed on the private rooftop patio.



ROOF FLOOR

## Andaman Discovery Penthouse (92.18 sqm)

High ceilings help appreciate dramatic surroundings with a sweeping view across the bay from the living and dining space, which can be opened up to the tropical elements for al-fresco living on top of the world.



TYPE D

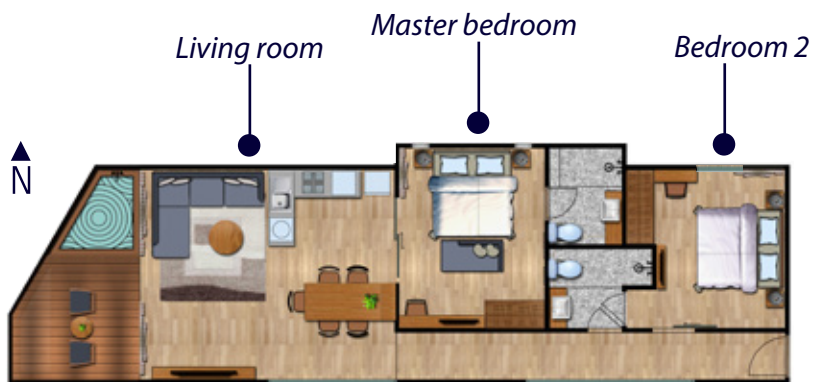


LIVING ROOM



## Andaman Discovery Penthouse (92.18 sqm)

*Your private island in the sky*



TYPE D

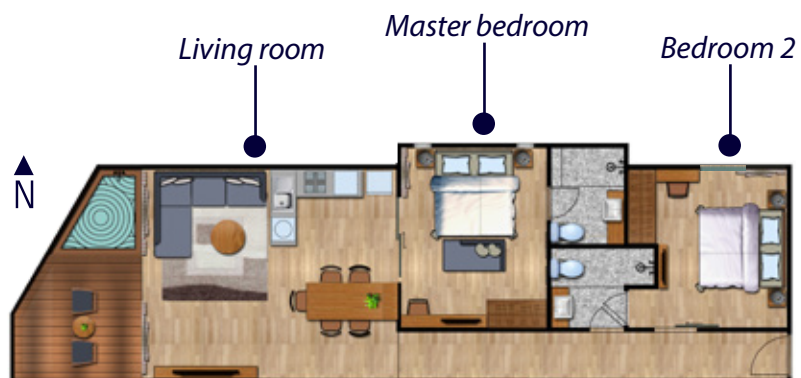


\*Computer generated image, subject to change without prior notice

MASTER BEDROOM

## Andaman Discovery Penthouse (92.18 sqm)

Luxurious and spacious family living with two bedrooms, a private rooftop garden and swimming pool.



TYPE D

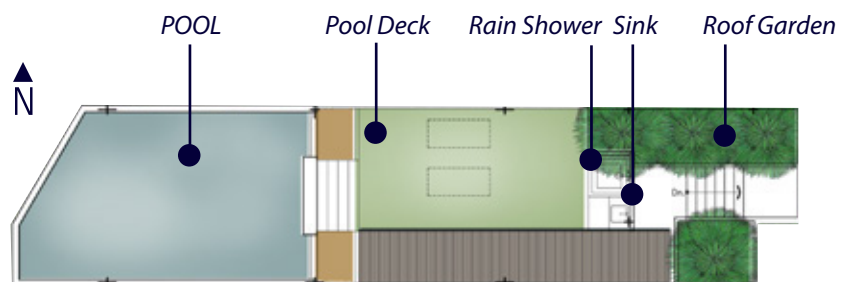


BEDROOM 2



## **Andaman Discovery Penthouse \* Private pool (194.40 sqm)**

The Penthouse's private roof garden features a private swimming pool and pool deck as well as al-fresco bathing with an outdoor rain shower.

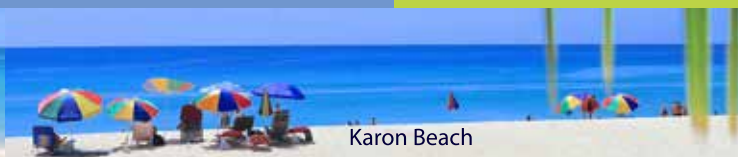


TYPE D

ROOF FLOOR



Karon Beach



Karon Beach



Karon Beach

## Nearby

Big Buddha	0.8 km.
Kata Beach	1.0 km.
Kata Porpeang Market	1.3 km.
Dino Park Mini Golf	1.8 km.
Kata Noi Beach	2.1 km.
Kata View Point	2.7 km.
Karon Beach	3.1 km.
Karon Temple	3.3 km.
HomePro Village	3.3km.
Karon Market	3.3 km.
Chalong Pier	3.8 km.
Chalong Temple	4.1 km.
Seashell Museum	4.6 km.
Phunaka Golf Course	4.7 km.
Nai Harn Beach	4.9 km.



Situated about 1km back from Kata Beach, Splendid Condo residents enjoy serenity by the sea nestled in the natural surrounding of the secluded hillside viewpoint while being conveniently close to Kata-Karon town.

Once a quiet fishing village, today's Karon is a well-established international community and well-connected tourist destination, but the place still possesses a distinct rustic appeal.



Kata Beach



Kata Beach



Kata Beach